

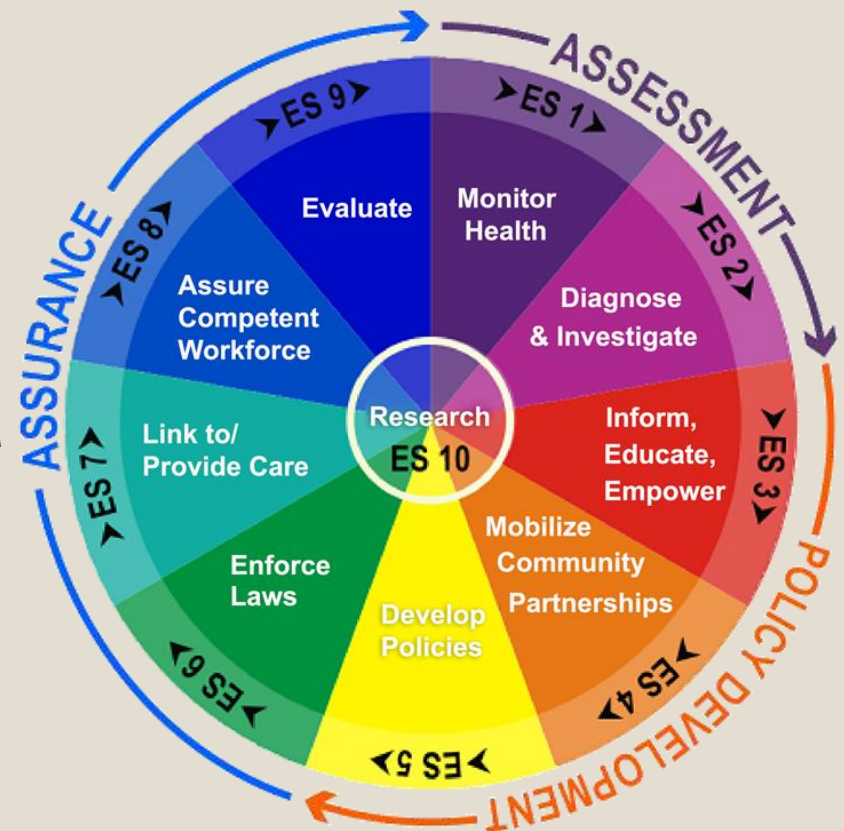
Essential Service 6: Enforce Laws and Regulations that Protect Health and Ensure Safety

Breakout Session C:
2:00PM-4:00PM

Facilitators:

Sarah Messiah, Ph.D., MPH
Iris Jackson, DNP, MBA, ARNP, FNP-BC, LHRM

- When we enforce health regulations are we technically competent, fair, and effective?



Session Outline

- ❖ **Introductions**
- ❖ Review ground rules
- ❖ **Process and material overview**
- ❖ Essential service and activities review
- ❖ **Review current Essential Service activity**
- ❖ Repeat the following for each Model Standard:
 - **Read Model Standard**
 - Discuss Model Standard activity (i.e., examples)
 - **Facilitate Discussion Questions**
 - Score Performance Measures
 - **Further discussion as needed/re-vote if necessary**
 - Consensus on final score
 - **Summarize strengths, weaknesses, and short- and long-term improvement opportunities for the Model Standard**
- ❖ Session Summary and Recap

Ground Rules

- Stay present (phones on silent/vibrate, limit side conversations)
- Speak one at a time
- Be open to new ideas
- Step up/step back (to make sure all participate)
- Avoid repeating previous remarks
- Allow facilitator to move conversation along
- Welcome all perspectives
- Use electronic device to vote (everyone votes at same time)
- Raise hand to request additional discussion before voting
- Prepare to provide examples and explanation to inform group and increase understanding of your rating



NACCHO
National Association of County & City Health Officials

National Public Health Performance Standards

Local Assessment Instrument

Version 3.0

Essential Service 6

Enforce Laws and Regulations that Protect Health and Ensure Safety

- Enforcing sanitary codes, especially in the food industry
- Protecting drinking water supplies
- Enforcing clean air standards
- Initiating animal control activities
- Following-up hazards, preventable injuries, and exposure-related diseases identified in occupational and community settings
- Monitoring quality of medical services (e.g., laboratories, nursing homes, and home healthcare providers)
- Reviewing new drug, biologic, and medical device applications



Essential Service 6 Partners

Model Standard 6.1: Reviewing and Evaluating Laws, Regulations, and Ordinances

- Reviews existing laws, regulations, and ordinances related to public health, including laws that prevent health problems, promote, and protect public health
- Looks at federal, state, and local laws to understand the authority provided to the system and the potential impact of laws, regulations, and ordinances on the health of the community
- Looks at any challenges involved in complying with laws, regulations, or ordinances, whether community members have any opinions or concerns, and whether any laws, regulations, or ordinances need to be updated



Model Standard 6.1: Reviewing and Evaluating Laws, Regulations, and Ordinances

To accomplish this, members of the LPHS work together to:

- Identify public health issues that can and should be addressed through laws, regulations, or ordinances
- Stay up-to-date with current laws, regulations, and ordinances that prevent, promote, or protect public health on the federal, state, and local levels
- Review existing public health laws, regulations, and ordinances at least once every three to five years
- Have access to legal counsel for technical assistance when reviewing laws, regulations, or ordinances
- Involve the local public health governing entity and other local government in reviewing and developing laws, regulations, or ordinances related to public health



Discussion Questions for Model Standard 6.1

Awareness



What has the LPHS identified that can best be addressed through laws, regulations, and ordinances?

Discussion Questions for Model Standard 6.1

Frequency



Are the reviews
conducted at least
once every three to
five years?

Discussion Questions for Model Standard 6.1

Quality and Comprehensiveness



How do LPHS organizations stay-up-to-date regarding federal, state, and local laws; regulations; and ordinances that protect public health?



Do governmental entities within the LPHS have access to legal counsel to assist with the review of laws, regulations, and ordinances related to the public's health?

Discussion Questions for Model Standard 6.1

Usability



How are laws, regulations, and ordinances that protect the public's health reviewed by the LPHS ensure appropriate compliance?

We will be using Participoll in this presentation.
Please have this website ready:

<http://mapp.participoll.com>

<http://mapp.participoll.com/>



If technical difficulties are encountered during the polling, please use the five assorted color index cards found in your welcome packet to vote.

Scoring Chart



A	Optimal Greater than 75% of the activity described within the question is met.
B	Significant Greater than 50% but no more than 75% of the activity described within the question is met.
C	Moderate Greater than 25% but no more than 50% of the activity described within the question is met.
D	Minimal Greater than zero but no more than 25% of the activity described within the question is met.
E	No Activity 0% or absolutely no activity.

To vote, visit <http://mapp.participoll.com>

If technical difficulties are encountered during the polling, please use the five assorted color index cards found in your welcome packet to vote.

To vote, visit <http://mapp.participoll.com>



Performance Measures for Model Standard 6.1

At what level does the LPHS...

6.1.1 Identify public health issues that can be addressed through laws, regulations, or ordinances?

A	Optimal Greater than 75% of the activity described within the question is met.
B	Significant Greater than 50% but no more than 75% of the activity described within the question is met.
C	Moderate Greater than 25% but no more than 50% of the activity described within the question is met.
D	Minimal Greater than zero but no more than 25% of the activity described within the question is met.
E	No Activity 0% or absolutely no activity.



To vote, visit <http://mapp.participoll.com>



Performance Measures for Model Standard 6.1

At what level does the LPHS...

6.1.2 Stay up-to-date with current laws, regulations, and ordinances that prevent health problems or that promote or protect public health on the federal, state, and local levels?

A	Optimal Greater than 75% of the activity described within the question is met.
B	Significant Greater than 50% but no more than 75% of the activity described within the question is met.
C	Moderate Greater than 25% but no more than 50% of the activity described within the question is met.
D	Minimal Greater than zero but no more than 25% of the activity described within the question is met.
E	No Activity 0% or absolutely no activity.



To vote, visit <http://mapp.participoll.com>



Performance Measures for Model Standard 6.1

At what level does the LPHS...

6.1.3 Review existing public health laws, regulations, and ordinances at least once every three to five years?

A	Optimal Greater than 75% of the activity described within the question is met.
B	Significant Greater than 50% but no more than 75% of the activity described within the question is met.
C	Moderate Greater than 25% but no more than 50% of the activity described within the question is met.
D	Minimal Greater than zero but no more than 25% of the activity described within the question is met.
E	No Activity 0% or absolutely no activity.



To vote, visit <http://mapp.participoll.com>



Performance Measures for Model Standard 6.1

At what level does the LPHS...

6.1.4 Have access to legal counsel for technical assistance when reviewing laws, regulations, or ordinances?

A	Optimal Greater than 75% of the activity described within the question is met.
B	Significant Greater than 50% but no more than 75% of the activity described within the question is met.
C	Moderate Greater than 25% but no more than 50% of the activity described within the question is met.
D	Minimal Greater than zero but no more than 25% of the activity described within the question is met.
E	No Activity 0% or absolutely no activity.



Performance Measures for Model Standard 6.1

Strengths

Weaknesses

**Short-Term
Improvement
Opportunities**

**Long-Term
Improvement
Opportunities**

Model Standard 6.2: Involvement in Improving Laws, Regulations, and Ordinances

- Works to change existing laws, regulations, ordinances, or to create new ones
- To promote public health, the LPHS helps to draft the new or revised legislation, regulations, or ordinances

Model Standard 6.2: Involvement in Improving Laws, Regulations, and Ordinances

To accomplish this, members of the LPHS work together to:

- Identify local public health issues that are inadequately addressed in existing laws, regulations, and ordinances
- Participate in changing existing laws, regulations, and ordinances, and/or creating new laws, regulations, and ordinances to protect and promote public health

Model Standard 6.2: Involvement in Improving Laws, Regulations, and Ordinances

To accomplish this, members of the LPHS work together to:

- Provide technical assistance in drafting the language for proposed changes or new laws, regulations, and ordinances
- Evaluate the effects of policies, laws, regulations, and ordinances

Discussion Questions for Model Standard 6.2

Awareness



What examples are there of identified local public health issues that are not adequately addressed through existing laws, regulations, and ordinances?

Discussion Questions for Model Standard 6.2

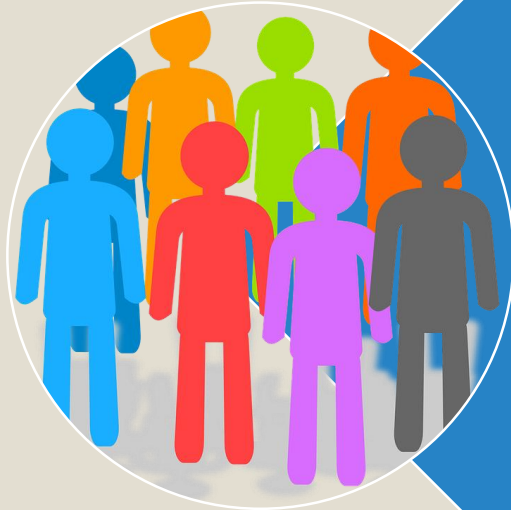
Involvement



How have LPHS organizations provided technical guidance or support to legislative, regulatory, or advocacy groups drafting proposed legislation, regulations, or ordinances?

Discussion Questions for Model Standard 6.2

Frequency



How have LPHS organizations participated in developing or modifying laws, regulations, or ordinances for those public health issues in the past three to five years?

To vote, visit <http://mapp.participoll.com>



Performance Measures for Model Standard 6.2

At what level does the LPHS...

6.2.1 Identify local public health issues that are inadequately addressed in existing laws, regulations, and ordinances?

A	Optimal Greater than 75% of the activity described within the question is met.
B	Significant Greater than 50% but no more than 75% of the activity described within the question is met.
C	Moderate Greater than 25% but no more than 50% of the activity described within the question is met.
D	Minimal Greater than zero but no more than 25% of the activity described within the question is met.
E	No Activity 0% or absolutely no activity.



To vote, visit <http://mapp.participoll.com>



Performance Measures for Model Standard 6.2

At what level does the LPHS...

6.2.2 Participate in changing existing laws, regulations, and ordinances, and/or creating new laws, regulations, and ordinances to protect and promote public health?

A	Optimal Greater than 75% of the activity described within the question is met.
B	Significant Greater than 50% but no more than 75% of the activity described within the question is met.
C	Moderate Greater than 25% but no more than 50% of the activity described within the question is met.
D	Minimal Greater than zero but no more than 25% of the activity described within the question is met.
E	No Activity 0% or absolutely no activity.



To vote, visit <http://mapp.participoll.com>



Performance Measures for Model Standard 6.2

At what level does the LPHS...

6.2.3 Provide technical assistance in drafting the language for proposed changes or new laws, regulations, and ordinances?

A	Optimal Greater than 75% of the activity described within the question is met.
B	Significant Greater than 50% but no more than 75% of the activity described within the question is met.
C	Moderate Greater than 25% but no more than 50% of the activity described within the question is met.
D	Minimal Greater than zero but no more than 25% of the activity described within the question is met.
E	No Activity 0% or absolutely no activity.



Discussion Notes for Model Standard 6.2

Strengths

Weaknesses

**Short-Term
Improvement
Opportunities**

**Long-Term
Improvement
Opportunities**

Model Standard 6.3: Enforcing Laws, Regulations, and Ordinances

- The LPHS sees that public health laws, regulations, and ordinances are followed
- Knows which governmental agency or other organization has the authority to enforce any given public health-related requirement within its community
- Supports all organizations tasked with enforcement responsibilities, and ensures that the enforcement is conducted within the law

Model Standard 6.3: Enforcing Laws, Regulations, and Ordinances

- LPHS makes sure that individuals and organizations understand the requirements of relevant laws, regulation, and ordinances.
- Communicates the reasons for legislation and the importance of compliance

Model Standard 6.3: Enforcing Laws, Regulations, and Ordinances

To accomplish this, members of the LPHS work together to:

- Identify organizations that have the authority to enforce public health laws, regulations, and ordinances
- Ensure that a local health department (or other governmental public health entity) has the authority to act in public health emergencies

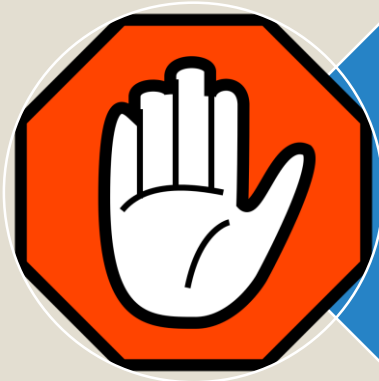
Model Standard 6.3: Enforcing Laws, Regulations, and Ordinances

To accomplish this, members of the LPHS work together to:

- Ensure that all enforcement activities related to public health codes are done within the law
- Inform and educate individuals and organizations about relevant laws, regulations, and ordinances
- Evaluate how well local organizations comply with public health laws

Discussion Questions for Model Standard 6.3

Awareness



What authority does the local health department (i.e., governmental public health entity) within the LPHS have to enforce laws, regulations, or ordinances related to the public's health?



How are the roles and responsibilities related to the authority documented?

Discussion Questions for Model Standard 6.3

Involvement



Does the LPHS provide information to the individuals and organizations that are required to comply with certain laws, regulations, or ordinances?

Discussion Questions for Model Standard 6.3

Frequency



COMPLIANCE

How often does the LPS assess the compliance of institutions and businesses with laws, regulations, and ordinances?

Discussion Questions for Model Standard 6.3

Quality and Comprehensiveness



How are those responsible for enforcement activities trained on compliance and enforcement?



How is the local health department empowered through laws and regulations to implement necessary community interventions in the event of a public health emergency?



How does the LPHS ensure that all enforcement activities are conducted in accordance with laws, regulations, and ordinances?

Discussion Questions for Model Standard 6.3

Quality and Comprehensiveness



How has the LPHS assessed the compliance of institutions and businesses in the community (e.g., schools, food establishments, day care facilities) with laws, regulations, and ordinances designed to promote and protect public health?



What information is gathered?

Discussion Questions for Model Standard 6.3

Usability



Is dissemination of information on public health laws, regulations, and ordinances integrated with other public health activities (e.g., health education, communicable disease control, health assessment, planning)?

To vote, visit <http://mapp.participoll.com>



Performance Measures for Model Standard 6.3

At what level does the LPHS...

6.3.1 Identify organizations that have the authority to enforce public health laws, regulations, and ordinances?

A	Optimal Greater than 75% of the activity described within the question is met.
B	Significant Greater than 50% but no more than 75% of the activity described within the question is met.
C	Moderate Greater than 25% but no more than 50% of the activity described within the question is met.
D	Minimal Greater than zero but no more than 25% of the activity described within the question is met.
E	No Activity 0% or absolutely no activity.



To vote, visit <http://mapp.participoll.com>



Performance Measures for Model Standard 6.3

At what level does the LPHS...

6.3.2 Ensure that a local health department (or other governmental public health entity) has the authority to act in public health emergencies?

A	Optimal Greater than 75% of the activity described within the question is met.
B	Significant Greater than 50% but no more than 75% of the activity described within the question is met.
C	Moderate Greater than 25% but no more than 50% of the activity described within the question is met.
D	Minimal Greater than zero but no more than 25% of the activity described within the question is met.
E	No Activity 0% or absolutely no activity.



To vote, visit <http://mapp.participoll.com>



Performance Measures for Model Standard 6.3

At what level does the LPHS...

6.3.3 Ensure that all enforcement activities related to public health codes are done within the law?

A	Optimal Greater than 75% of the activity described within the question is met.
B	Significant Greater than 50% but no more than 75% of the activity described within the question is met.
C	Moderate Greater than 25% but no more than 50% of the activity described within the question is met.
D	Minimal Greater than zero but no more than 25% of the activity described within the question is met.
E	No Activity 0% or absolutely no activity.



To vote, visit <http://mapp.participoll.com>



Performance Measures for Model Standard 6.3

At what level does the LPHS...

6.3.4 Educate individuals and organizations about relevant laws, regulations, and ordinances?

A	Optimal Greater than 75% of the activity described within the question is met.
B	Significant Greater than 50% but no more than 75% of the activity described within the question is met.
C	Moderate Greater than 25% but no more than 50% of the activity described within the question is met.
D	Minimal Greater than zero but no more than 25% of the activity described within the question is met.
E	No Activity 0% or absolutely no activity.



To vote, visit <http://mapp.participoll.com>



Performance Measures for Model Standard 6.3

At what level does the LPHS...

6.3.5 Evaluate how well local organizations comply with public health laws?

A	Optimal Greater than 75% of the activity described within the question is met.
B	Significant Greater than 50% but no more than 75% of the activity described within the question is met.
C	Moderate Greater than 25% but no more than 50% of the activity described within the question is met.
D	Minimal Greater than zero but no more than 25% of the activity described within the question is met.
E	No Activity 0% or absolutely no activity.



Discussion Notes for Model Standard 6.3

Strengths

Weaknesses

**Short-Term
Improvement
Opportunities**

**Long-Term
Improvement
Opportunities**

Essential Service 6: Enforce Laws and Regulations that Protect Health and Ensure Safety

Session Summary

